



Purpose of Rehabilitation Optometry



- Quality of vision and quality of life are closely connected.
- Purpose is to restore as much visual functioning as possible.
- While avoiding long-term compromise of ocular health.
- Refractive surgery produces many thousands of patients who need specialty contact lenses every year.

Scope of Rehabilitation Optometry



...includes acts of Nature



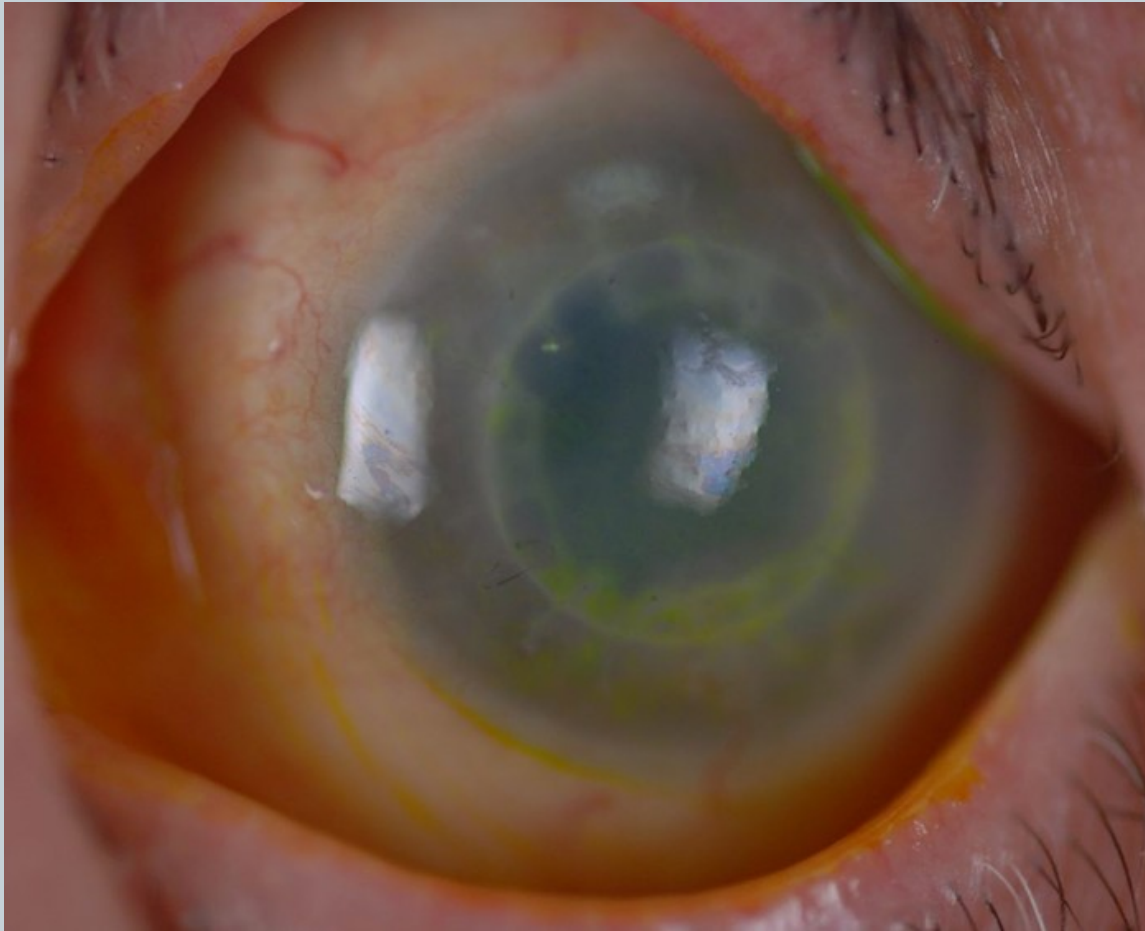
Stevens-Johnson Syndrome
With Scleral Lens

...and aberrations of human design.



Scleral Lens over post-LASIK
Ectasia with Intacs.

Rehabilitation Optometry can Prevent the need for Some Transplants



Rejected
Corneal
Graft



A Partial List of Post-Lasik Problems



- Reduced best-corrected visual acuity
- Irregular or distorted corneas
- Open wounds and/or weakened corneal flap
- Higher order aberrations
- Decentered optical zones
- Corneal ectasia
- Extremely dry eye
- Ocular pain and headaches
- Vitreous floaters
- Reduced contrast sensitivity
- Dramatically reduced night vision
- Visual phenomena such as glare, flare, halos around lights, starbursts
- Overcorrection of the pre-surgical refractive error
- Emotional issues due to many of the above factors



Special Mission of Optometry for RS Patients: Contact Lenses Save Lives



- Patients who experience LASIK complications may experience depression and suicidal thoughts.
- A number of patients have told me they have considered suicide because of LASIK complications.
- Several patients who had suicidal thoughts are grateful for regaining their vision with these new technologies.
- Existing scientific research links visual impairment to depression and suicidal thoughts.

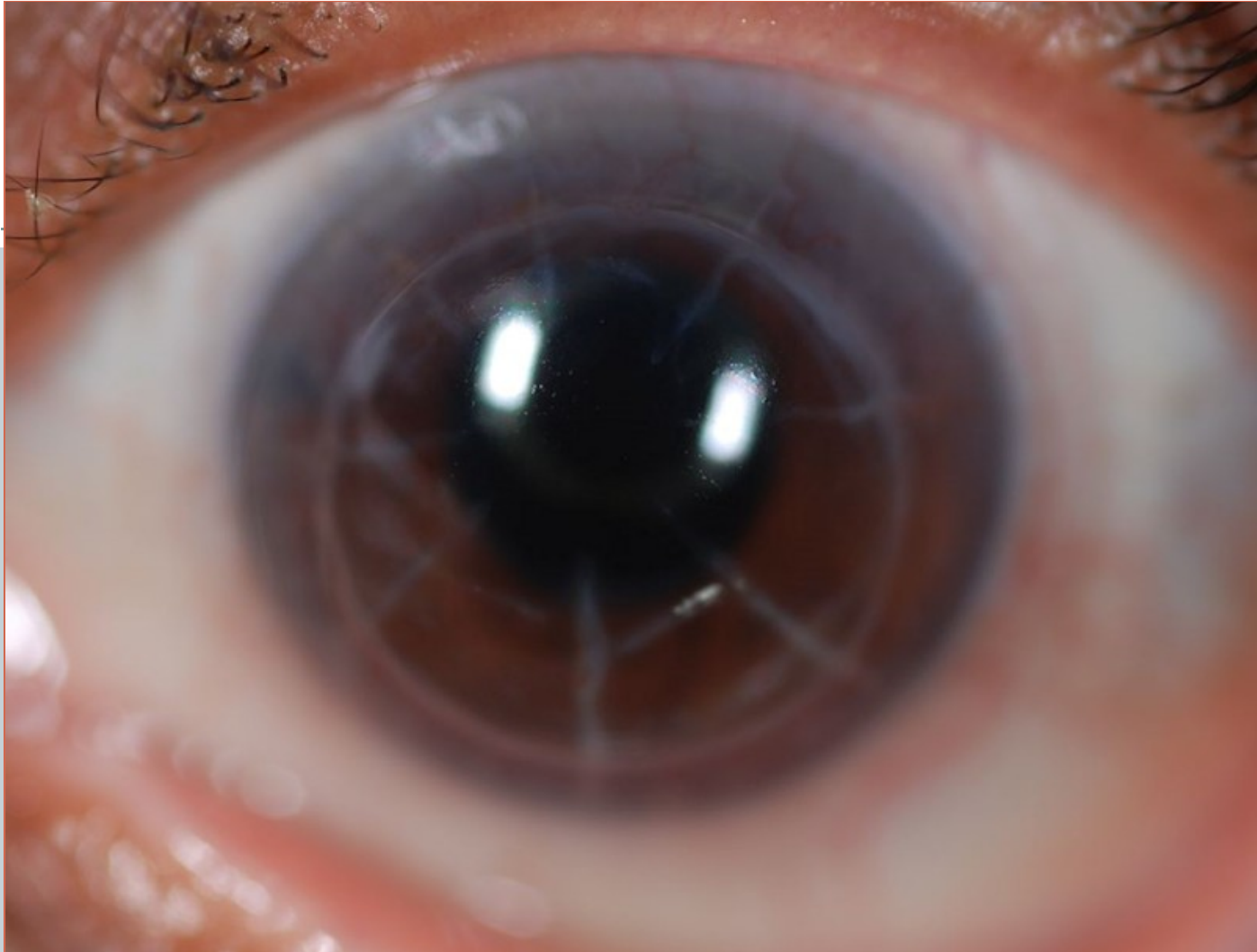
Radial Keratotomy Scars



LASIK over Radial Keratotomy



Radial Keratotomy over Cornea Transplant

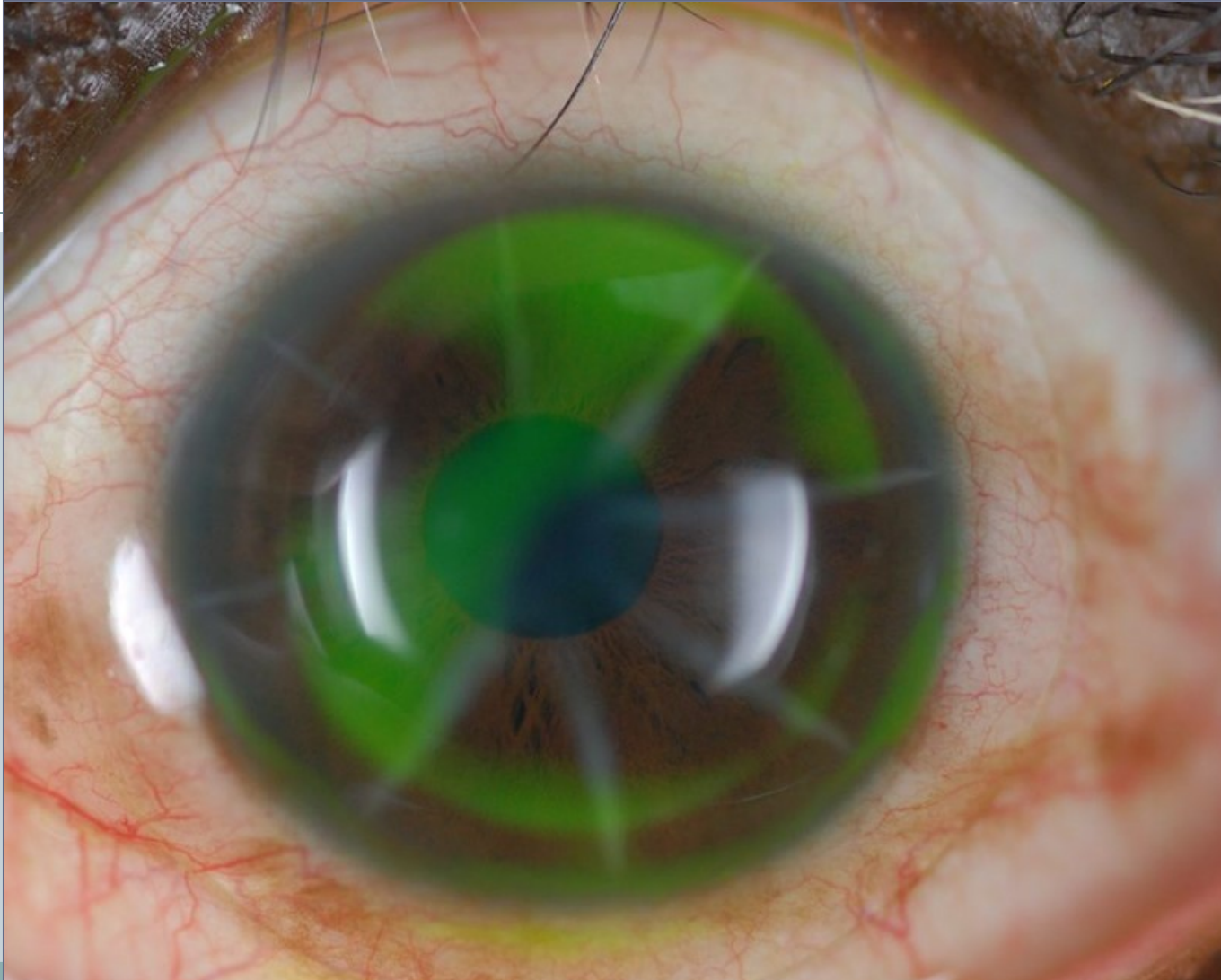


SynergEyes Lens

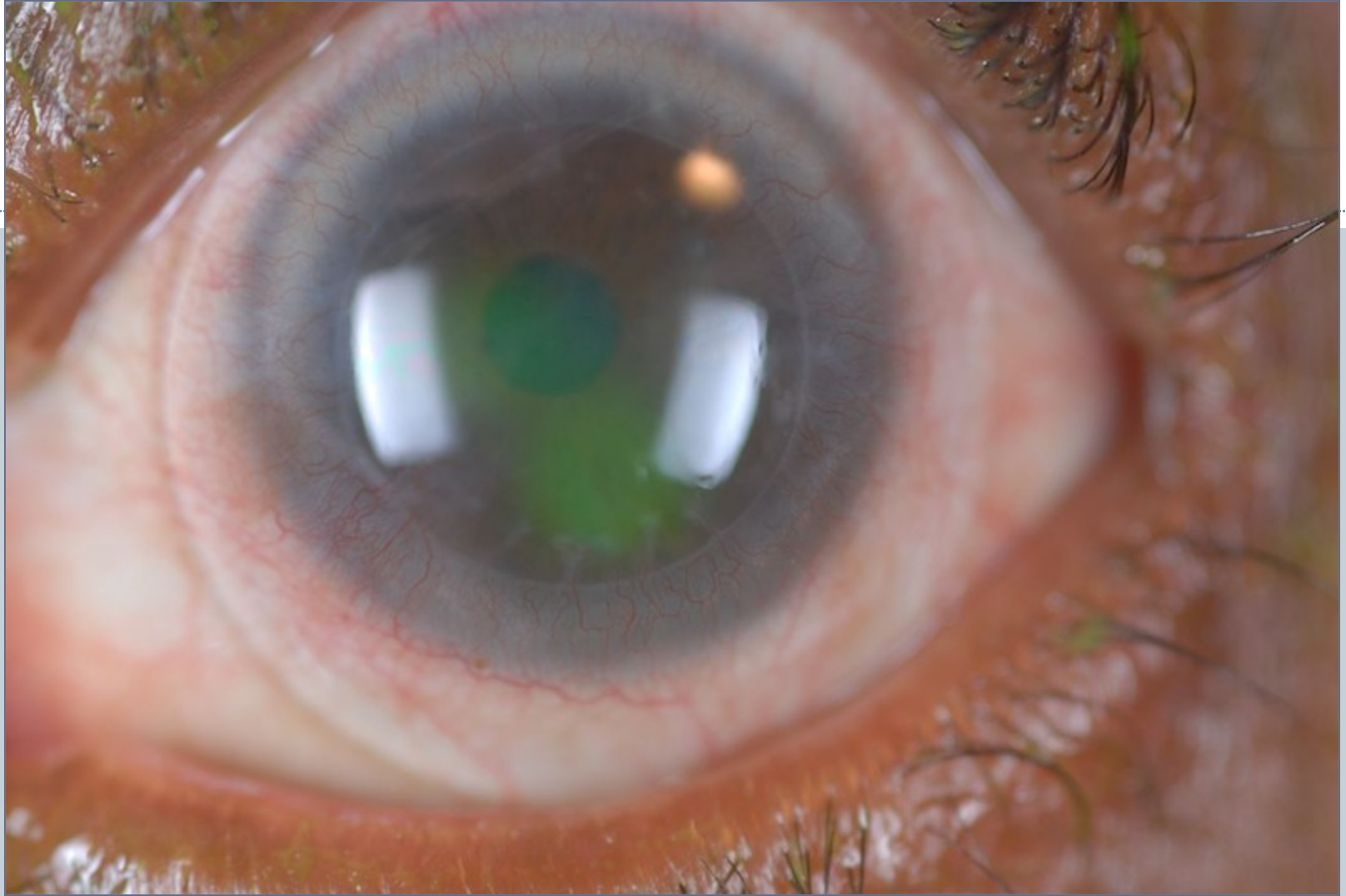


- A hybrid contact lens that combines the superior visual acuity of a rigid lens with the comfort of a soft contact lens.
- Rigid center and soft lens skirt: A stable, high oxygen permeable rigid center that delivers consistent RGP-like vision with the comfort of a soft contact lens.

Synergeyes Lens on RK Cornea



Synergeyes Lens on Transplanted Cornea

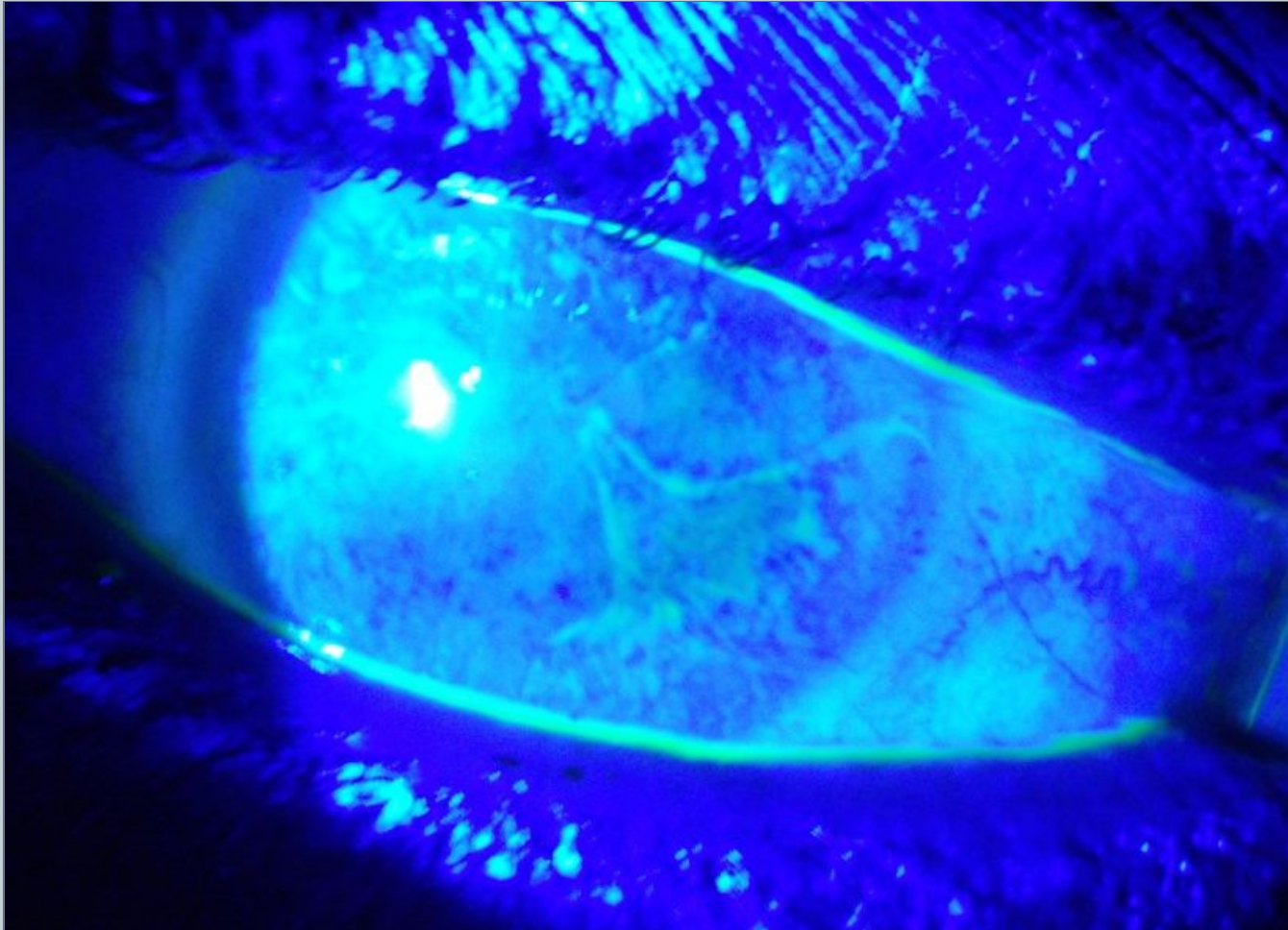


Scleral Lenses

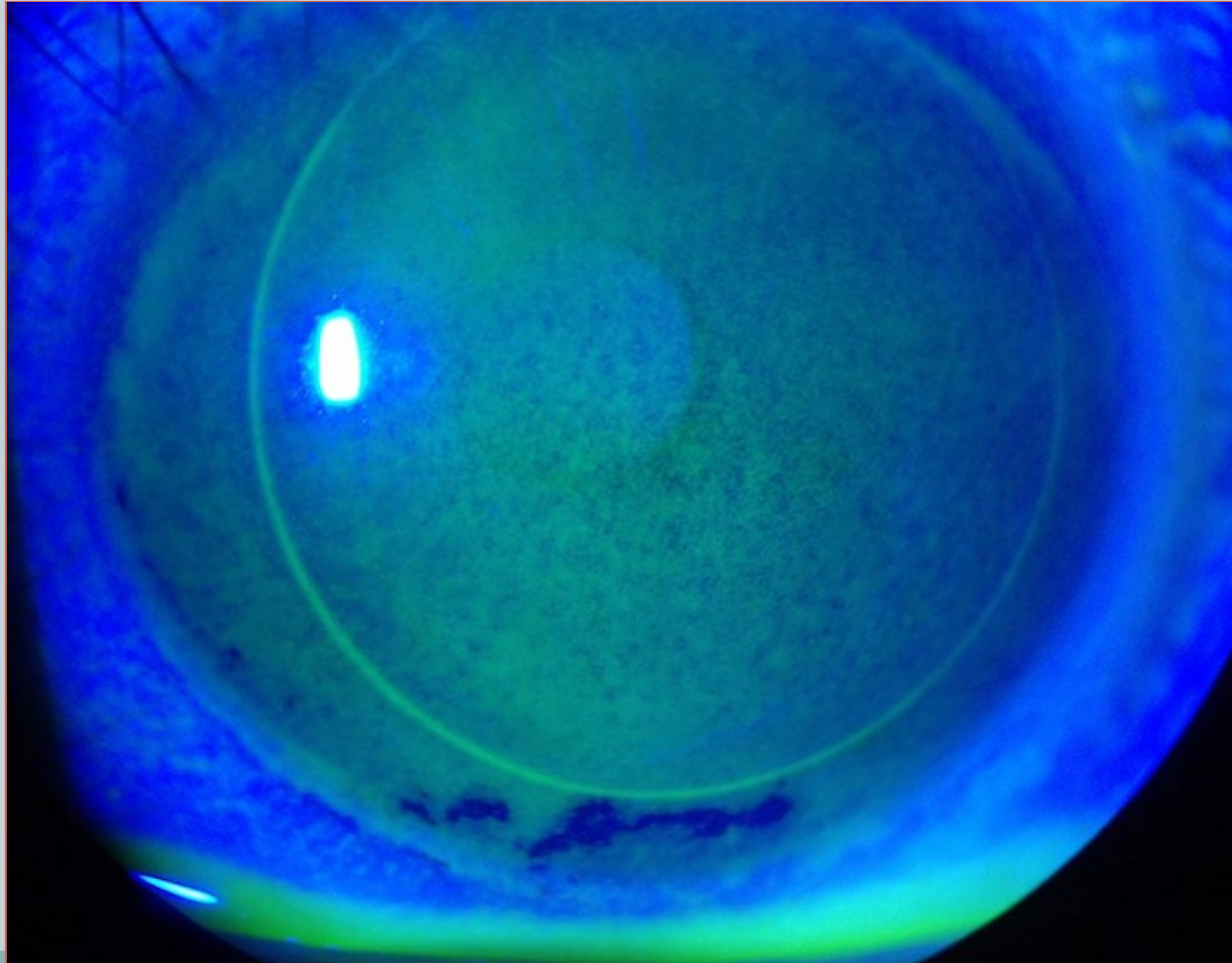


- Much larger diameter than typical RGP.
- Lens vaults the entire cornea, literally resting on the “white of the eye”, the sclera.
- Lens is filled with fluid reservoir, thus also providing a treatment for post-LASIK dry eye.

Extremely Dry Post-LASIK Cornea



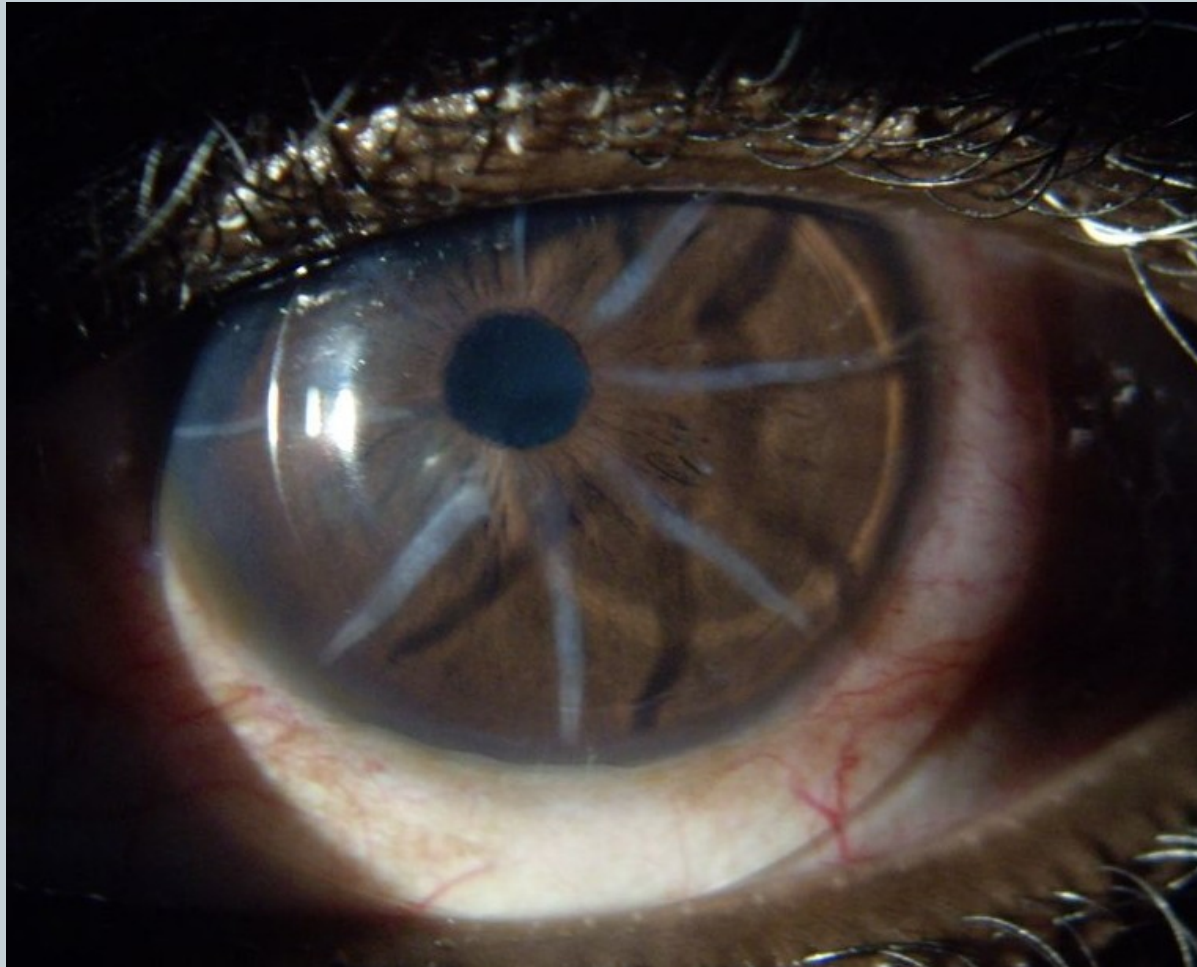
Extremely Dry Post-LASIK Cornea



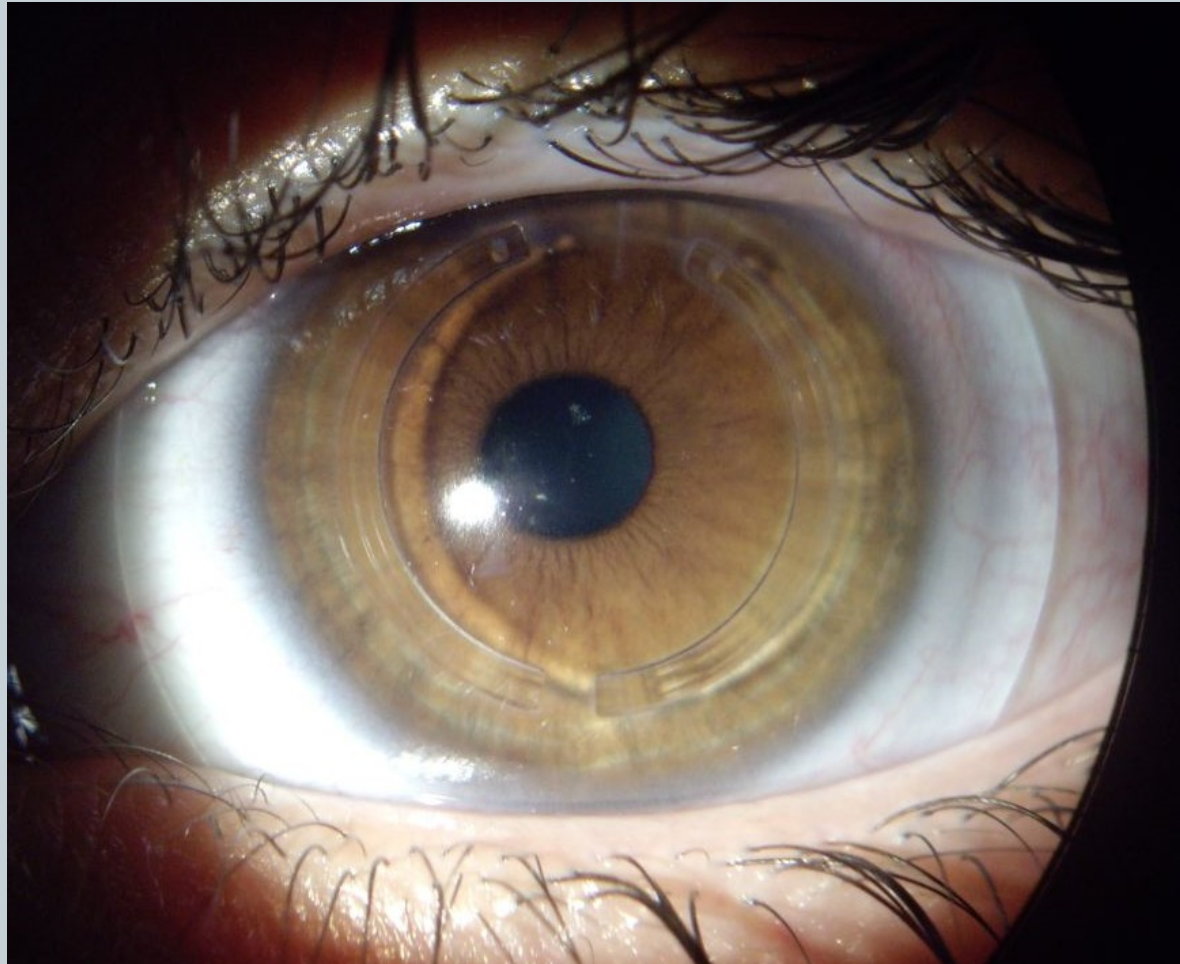
Scleral Lens on Lasik over RK Cornea



Scleral Lens on RK Eye



Scleral Lens on Post-LASIK Ectasia with Intacs



Scleral Lens on Transplanted Cornea

